



OUR ADVERTISERS REACH THE
RESIDENTIAL DESIGN ELITE
ADVERTISE WITH US

the Schemer

Having trouble viewing this email? [View as a web page >](#)



the Schemer

the latest residential design news from **Studio.**



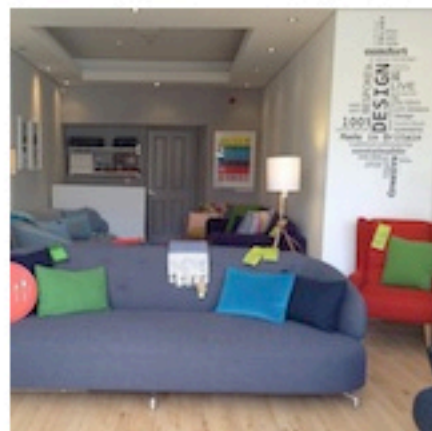
Excellent coverage

One of the most striking trends in residential interiors in recent years has been the return of colour and pattern. At the height of so-called minimalism, pattern had all but disappeared, and bold colour was something used very sparingly. Now, of course, they are back, and their appeal and the creativity of the designers that make them are increasingly celebrated. Companies like the Danish contemporary specialist [Kvadrat](#) have managed to lure leading designers to collaborate on new textile collections, most recently with this month's launch from Belgian fashion designer Raf Simons. UK retailer [Heal's](#) is also returning to fabric after a gap of nearly four decades. Its new collection (above) launches on Saturday featuring nine designers, with a mix of distinctive new and archive prints from the likes of Zandra Rhodes and Cressida Bell. And [Graham & Brown](#) is about to reveal its New Wave collection, curated by respected journalist Barbara Chandler and including the work of 13 young designers. If you'll forgive the journalist's pun, excellent coverage is guaranteed!

Kate Burnett, editor

Coming up on [Studio](#): Look out for our pick of this month's Surface Design Show, plus we spotlight the [best of lighting](#) from the Paris shows in January, and if you're short of time, you can get a quick fix of products and people news at the bottom of all our section pages.

Showrooms



Couch

[Couch](#) opened its new Bristol showroom just before Christmas 2013. The company offers a range of upholstered seating including sofas and chairs and can also take on bespoke commissions. Judith and Ian Archer have created an ethical business with a strong environmental conscience, manufacturing locally and offering products in a range of British and 'eco' fabrics. Ian Archer's design credentials include working for Ercol, Heals and Wesley Barrell. Couch will also be exhibiting at Clerkenwell Design Week.



bB Design House

Home stagers and interior designers [bB Design House](#) have just launched a new West London showroom. Visitors can explore an extensive range of well-known luxury brands of lighting, fabrics, furniture and home accessories from Villiers and Andrew Martin to India Jane and Ben Whistler. The showroom also offers a full interior design service available in London and the surrounding area as well as fully furnished packages to anyone relocating to London. Showroom visits are strictly by appointment.

Events

[Design Museum DM25 Talks](#) Monday 24 March 2014 / Shad Thames, London SE1 2YD

What next for Thomas Heatherwick? Design Museum Director Deyan Sudjic asks design maverick Thomas Heatherwick what's next for his studio.

[Cheltenham Design Festival](#) 04 April - 05 April / Cheltenham Ladies' College's Parabola Arts Centre, Cheltenham, Gloucestershire GL50 3AA

More than a series of talks, the Cheltenham Design Festival is about making creative connections and learning how design can improve our lives.